



## Rotax MAX Challenge Technical Regulation 2015

Bulletin no. 3, 2015 05 21

Addendum (marked red) to RMC Technical Regulations 2015, Edition 2014 12 12

### 6.5 Exhaust valve (125 MAX and 125 MAX DD2)

Two versions of original exhaust valve systems (pneumatic/electronic timed) are legal to be used. Both systems have to be used as supplied with all components fitted.

Length of the exhaust valve (item 4 of pneumatic timing, item 2 of electronic timed exhaust valve) is 36,5 mm +0,20 mm/-0,30 mm.

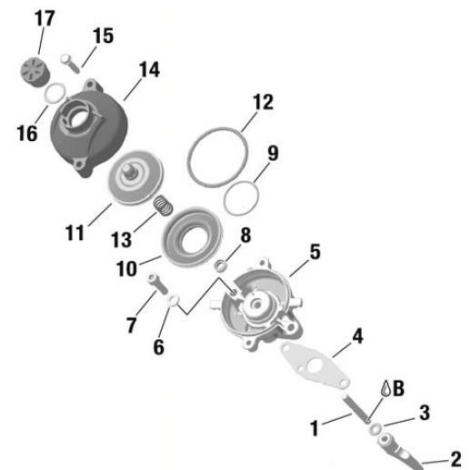
Width of collar is 4,8 mm +/-0,3 mm

Green colored exhaust bellow (item 11 of pneumatic timed exhaust valve, item 10 of electronic timed exhaust valve, Rotax part no. 260 723) only is legal to be used.

Version 1, pneumatic timed exhaust valve.



Version 2, electronic timed exhaust valve  
(crankcase vacuum used to close exhaust valve)  
Spring (13) below the exhaust valve piston (11)

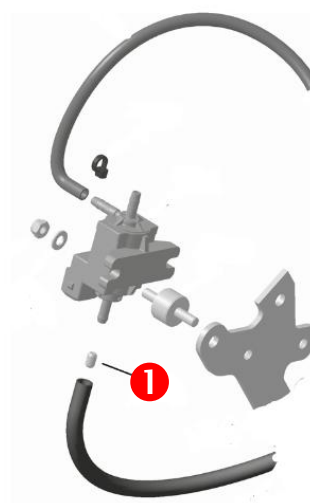
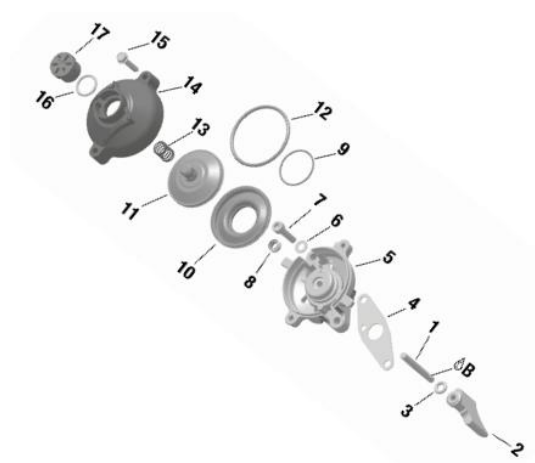


At the electronic times exhaust valve also the version using the positive pressure in crankcase to close the exhaust valve is legal to be used.

### Version 2, electronic timed exhaust valve

(crankcase positive pressure used to close exhaust valve)

Spring (13) outside the exhaust valve piston (11)



To fit the impulse nozzle ❶ into the pressure hose is an allowed adjustment.  
The direction of the impulse nozzle inside the pressure hose is free.

## 6.6. Ignition system

The marking of the pick-up must show the following numbers in the first line 029600-0710.

A steel ball (diameter 3-5 mm) placed on circular surface of the sensor must stay in the center of the circular surface.



To fit the gasket (Rotax 431 500, thickness 0,8 mm) between the pick-up and the crankcase is an allowed option.

