



Rotax MAX Challenge Technical Regulation 2015

Bulletin no. 4, 2015 07 22

Addendum/corrections (marked red) to RMC Technical Regulations 2015, Edition 2014 12 12

6.5 Exhaust valve (125 MAX and 125 MAX DD2)

Two versions of original exhaust valve systems (pneumatic/electronic timed) are legal to be used. Both systems have to be used as supplied with all components fitted.

Length of the exhaust valve (item 4 of pneumatic timing, item 2 of electronic timed exhaust valve) is 36,5 mm +0,20 mm/-0,30 mm.

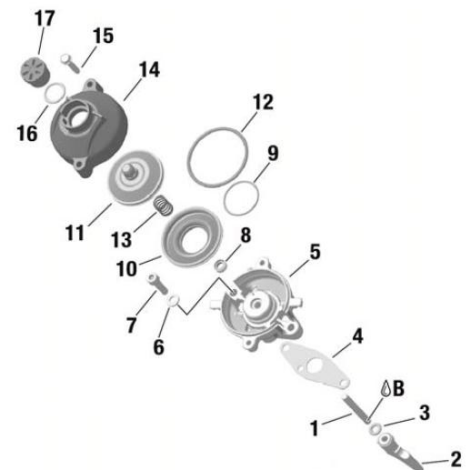
Width of collar is 4,8 mm +/-0,3 mm

Green colored exhaust bellow (item 11 of pneumatic timed exhaust valve, item 10 of electronic timed exhaust valve, Rotax part no. 260 723) only is legal to be used.

Version 1, pneumatic timed exhaust valve.



Version 2, electronic timed exhaust valve (crankcase vacuum used to close exhaust valve) Spring (13) below the exhaust valve piston (11)

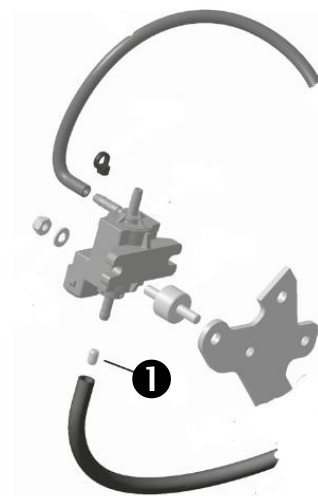
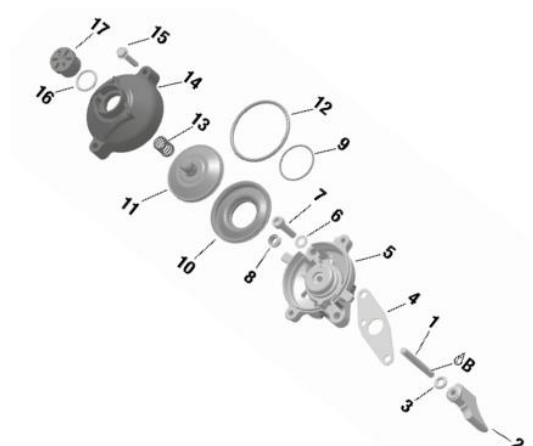


At the electronic times exhaust valve also the version using the positive pressure in crankcase to close the exhaust valve is legal to be used.

Version 2, electronic timed exhaust valve

(crankcase positive pressure used to **open** exhaust valve)

Spring (13) outside the exhaust valve piston (11)



To fit the impulse nozzle ❶ into the pressure hose is an allowed adjustment. The direction of the impulse nozzle inside the pressure hose is free.

6.6. Ignition system

The marking of the pick-up must show the following numbers in the first line 029600-0710.

A steel ball (diameter 3-5 mm) placed on circular surface of the sensor must stay in the center of the circular surface.

Mounting the pick up to the crankcase with a gasket additional to the original rubber sealing ring of the pick-up, is a legal specification.

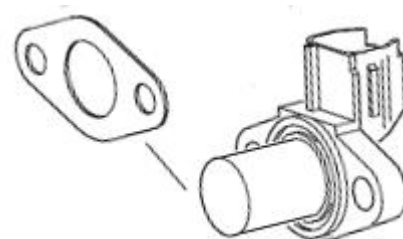
Additional gasket, Rotax 431 500, gasket thickness = 0,8 mm

Maximum two gaskets (Rotax 431 500) are allowed to be fitted.

Fitting position of the additional gasket(s):

Crankcase – rubber sealing ring – additional gasket(s) – pick-up
(recommended version) or

crankcase - additional gasket(s) – rubber sealing ring – pick-up.



Version 2, Dellorto ignition system

The electronic control unit (ECU) is labeled with stickers and is still legal also if the sticker is unreadable or disappeared.

125 Junior MAX: "666812, 125 Junior MAX evo"

125 MAX: "666814, 125 MAX evo"

125 MAX DD2: "666816, 125 MAX DD2 evo"

The ECU has to be checked with the ECU tester (Rotax part no. 276 230) according to following procedure.

Disconnect engine cable harness from ECU.

Connect ECU tester cable harness to ECU.

Connect energy cable of ECU tester cable harness with the charging connector of engine cable harness.

Start the test by pressing the button "✓" on the ECU tester.

After approx. 1 second the type of ECU ① that is actually tested will be indicated in the second line of the display.

After approx. 15 seconds the result ② of the test will be indicated in the first line of the display.



The test has to be performed using the software version **1V22** of the ECU tester (indicated at every start of an ECU test).

The ECU tester has to indicate following results:

125 Junior MAX

~~ECU TEST OK~~

①

~~125 Junior MAX evo~~

②

125 Junior MAX category

Jnr. MAX EVO

!! Test OK !!

125 MAX

~~ECU TEST OK~~

①

~~125 MAX evo~~

②

125 MAX category

MAX EVO

!! Test OK !!

125 MAX DD2

~~ECU TEST OK~~

①

~~125 MAX DD2 evo~~

②

125 MAX DD2 category

MAX DD2 EVO

!! Test OK !!

